

## Sample the Stain Before You Buy

Proper sampling is where it starts. Sampling is critical because the same stain can look very different on various species of wood. Different prep and application methods also affect the final result. Therefore, sampling is the only way to make sure you get the color you want the first time.

Sampling is easy: on a small, inconspicuous test area (we recommend a minimum 2 sq. ft. space), simply do each step the way you will on all your logs or timbers.

- Prep the wood.
- Apply the stain.
- Let the stain dry (both between coats and after all coats have been applied).
- If working with a contractor, don't allow the contractor to stain until you have thoroughly discussed and demonstrated the look you want. Show him/her the sample.
- Don't stain all of the logs or timbers before you verify that you're achieving the look you want. It is best if you can be on-site during the staining process.

For more information on proper prep and application methods, visit our website at [www.sashco.com](http://www.sashco.com) or scan the Tag on this brochure to access it from your smart phone.

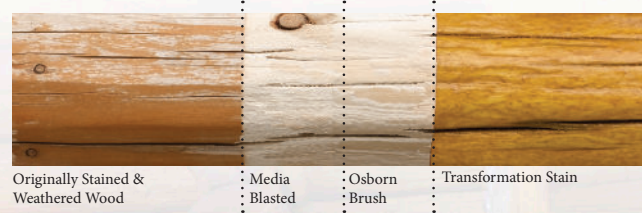
Dream home in progress

*Transformation Stain sprayed on & brushed  
Color: Brown Tone Medium*

## Restoration Tested . . . . Maintenance Approved!

Below is an example of a weathered, neglected log that has been restored and then re-stained with Transformation Log & Timber. Note the extensive prep necessary to restore the original color of the wood before stain was applied.

To avoid major restoration needs in the future, simply perform routine maintenance. When done every 3-5 years, it will result in a home that is consistently beautiful and not budget-busting.



The color samples shown are an approximation of how Transformation Log & Timber will look on your logs or timbers. The color may vary based on the species, texture and porosity of wood as well as the application technique. Test the stain on an inconspicuous area to make sure you get the color you want.

## Transformation Stain®

### Log & Timber on Restored Pine Logs

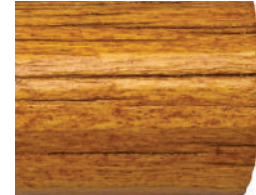
Gold Tone  
Light



Brown Tone  
Light



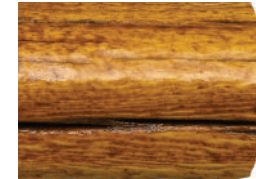
Gold Tone  
Medium



Brown Tone  
Medium



Gold Tone  
Dark



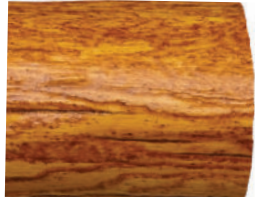
Brown Tone  
Dark



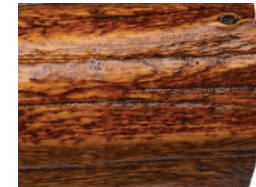
Red Tone  
Light



Red Tone  
Medium



Red Tone  
Dark



Redwood



Natural





# Beauty That Lasts.

It's truly. . .

## “A Better Way to Stain”.

### “A Better Way to Stain”

#### Reality check:

When applied incorrectly, a high quality stain will give you the same results as a low quality stain.

At Sashco, we want to help you avoid that pitfall. Sashco's Transformation Log & Timber is the quality product you're looking for, bundled with the support and education necessary to do it right the first time. It's what we call “A Better Way to Stain.” The result is beautiful logs and timbers you can enjoy for years to come.

#### Sampling

To get the look you want, sample the stain on your wood.

#### Prep

Proper prep starts you down the right path.

#### Application

Proper application of a quality stain ensures long-term performance.

#### Routine Maintenance

Reduce long-term costs, time and effort.

*Note: For detailed prep, application and maintenance info visit [www.sashco.com](http://www.sashco.com)*

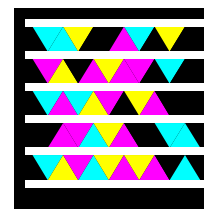


### Why Transformation Stain® Log & Timber?

- **Premium Results:** You can expect the best results because we put the best raw materials into the pail. This means at least 3-5 years of protection. It's that simple.
- **We Know Logs:** We've shared this knowledge and expertise with hundreds of contractors through our Zero Failures log and wood maintenance seminar. It's the same knowledge and expertise that goes into every pail of Transformation Log & Timber.
- **Stunning Oil Finish:** Transformation Log & Timber delivers the “Wow” factor with a beautiful, glossy sheen.
- **Shows the Wood Grain:** Wood is beautiful. So why hide it? Transformation Log & Timber brings a clarity to the wood grain that even your eye doctor would envy.
- **Easy to Choose:** For Logs & Timbers. No confusing names or convoluted labels.

Watch Helpful How-To Videos  
Chat Live • Search FAQs

[www.sashco.com](http://www.sashco.com)



Speak with Stain Experts  
Mon-Fri, 6 a.m. – 5 p.m. MST  
**1-800-767-5656**



10300 E. 107th Place • Brighton, CO 80601  
1-800-767-5656 • [www.sashco.com](http://www.sashco.com)

# Log & Timber

# Transformation Stain®

Restore the Wood Nature Destroyed

